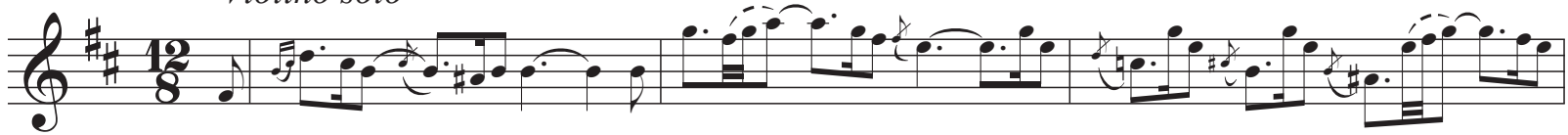


Erbarme dich

Aria 39 uit BWV 244

J. S. Bach

Violino solo



2

8 *Alto*

Er - bar - me dich

10

er - bar - me dich, mein Gott, um mei - ner Zäh -

12

- ren wil - len; er - bar - me dich er -

14



bar - me dich, mein Gott, er - bar - - - me, er -

Detailed description: This block contains the first two measures of a musical staff. The key signature has two sharps (F# and C#). Measure 14 starts with a treble clef and a series of eighth notes: F#4, G4, A4, B4, C5, B4, A4, G4. Measure 15 continues with a dotted quarter note G4, followed by a half note F#4, and then a quarter note G4. The lyrics are: bar - me dich, mein Gott, er - bar - - - me, er -


16



bar - me - dich um mei - ner Zäh - ren, um

Detailed description: This block contains the next two measures. Measure 16 starts with a dotted quarter note G4, followed by eighth notes F#4, G4, A4, B4, C5, B4, A4, G4. Measure 17 continues with a dotted quarter note G4, followed by eighth notes F#4, G4, A4, B4, C5, B4, A4, G4. The lyrics are: bar - me - dich um mei - ner Zäh - ren, um

18



mei - ner Zäh - ren wil - len; er - bar - me

Detailed description: This block contains the final two measures. Measure 18 starts with a dotted quarter note G4, followed by eighth notes F#4, G4, A4, B4, C5, B4, A4, G4. Measure 19 continues with a dotted quarter note G4, followed by eighth notes F#4, G4, A4, B4, C5, B4, A4, G4. The lyrics are: mei - ner Zäh - ren wil - len; er - bar - me

4

20

dich, mein Gott, um — mei - ner Zäh - - - ren, um

Violino solo

22

mei - ner Zäh - ren wil - len!

25

Alto

Shau - e —

27



hier _____ schau - e _____ hier _____ Herz _____ und Au - ge weint vor

Detailed description: This block contains the first line of musical notation, starting at measure 27. The music is written on a single staff in treble clef with a key signature of two sharps (F# and C#). The melody consists of eighth and quarter notes, with some phrases connected by slurs. The lyrics are written below the staff, with horizontal lines indicating syllable placement.


30



dir, weint _____ von dir bit - ter - lich. Er - bar - - - me

Detailed description: This block contains the second line of musical notation, starting at measure 30. The melody continues with eighth and quarter notes. The lyrics are written below the staff, with horizontal lines indicating syllable placement.

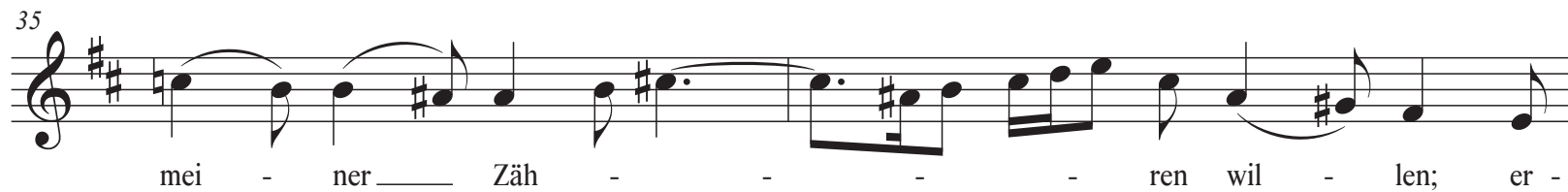
32



dich, er - bar - me dich _____ Er bar - me dich, mein Gott, um

Detailed description: This block contains the third line of musical notation, starting at measure 32. The melody features a more complex rhythmic pattern with sixteenth notes and eighth notes. The lyrics are written below the staff, with horizontal lines indicating syllable placement.

35



mei - ner _____ Zäh - - - ren wil - len; er -

Detailed description: This block contains the first two measures of a musical staff. The key signature has two sharps (F# and C#). Measure 35 starts with a treble clef and a common time signature. The melody begins with a half note G4, followed by a quarter note A4, a quarter note B4, and a quarter note C5. A slur covers the next two notes: a quarter note B4 and a quarter note A4. Measure 36 continues with a quarter note G4, a quarter note F#4, a quarter note E4, and a quarter note D4. A slur covers the final two notes: a quarter note C4 and a quarter note B3.

37



bar - me dich , er - bar - me dich, mein Gott, er -

Detailed description: This block contains the next two measures. Measure 37 starts with a treble clef and a common time signature. The melody begins with a quarter note G4, followed by a quarter note A4, a quarter note B4, and a quarter note C5. A slur covers the next two notes: a quarter note B4 and a quarter note A4. Measure 38 continues with a quarter note G4, a quarter note F#4, a quarter note E4, and a quarter note D4. A slur covers the final two notes: a quarter note C4 and a quarter note B3.

39



bar - - - me, er - bar - me dich _____ um

Detailed description: This block contains the final two measures. Measure 39 starts with a treble clef and a common time signature. The melody begins with a quarter note G4, followed by a quarter note A4, a quarter note B4, and a quarter note C5. A slur covers the next two notes: a quarter note B4 and a quarter note A4. Measure 40 continues with a quarter note G4, a quarter note F#4, a quarter note E4, and a quarter note D4. A slur covers the final two notes: a quarter note C4 and a quarter note B3.

41



mei - ner Zäh - ren, um mei - ner Zäh - ren wil - len;

Detailed description: This block contains the first two measures of a musical phrase. It begins with a treble clef and a key signature of two sharps (F# and C#). The melody starts on a half note G4, followed by a quarter note A4, a quarter note B4, and a quarter note C5. The second measure continues with a quarter note B4, a quarter note A4, a quarter note G4, and a quarter rest. The lyrics are written below the notes, with hyphens indicating syllables that span across measures.

43



er - bar - me dich, mein Gott, um mei - ner

Detailed description: This block contains the next two measures. It starts with a treble clef and a key signature of two sharps. The melody begins with a quarter rest, followed by a quarter note G4, a quarter note A4, a quarter note B4, and a quarter note C5. The second measure continues with a quarter note B4, a quarter note A4, a quarter note G4, and a quarter note F#4. The lyrics are written below the notes, with hyphens indicating syllables that span across measures.

45



Zäh - ren, um mei - ner Zäh - ren wil - len.

Detailed description: This block contains the final two measures of the phrase. It starts with a treble clef and a key signature of two sharps. The melody begins with a quarter note G4, a quarter note A4, a quarter note B4, and a quarter note C5. The second measure continues with a quarter note B4, a quarter note A4, a quarter note G4, and a quarter note F#4. The lyrics are written below the notes, with hyphens indicating syllables that span across measures.

Violino solo